

EMS TRAINING INC

EMT – BASIC Course

Chapter 10 – Assessment of the Trauma Patient Study Guide

The Trauma Patient

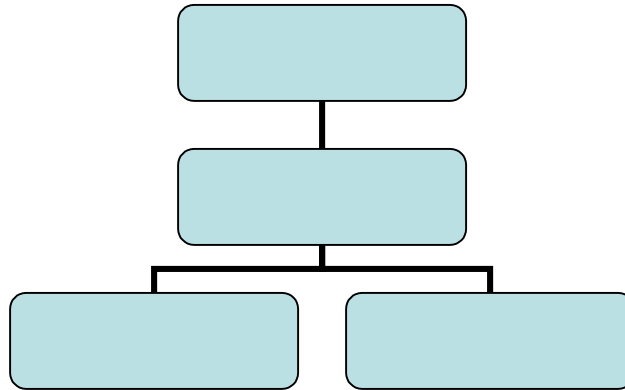
- _____
- _____
- _____
- _____
- _____
- _____
- _____
- _____

DCAP – BTLS

D	_____	B	_____
C	_____	T	_____
A	_____	L	_____
P	_____	S	_____

We must have an organized assessment plan (why)

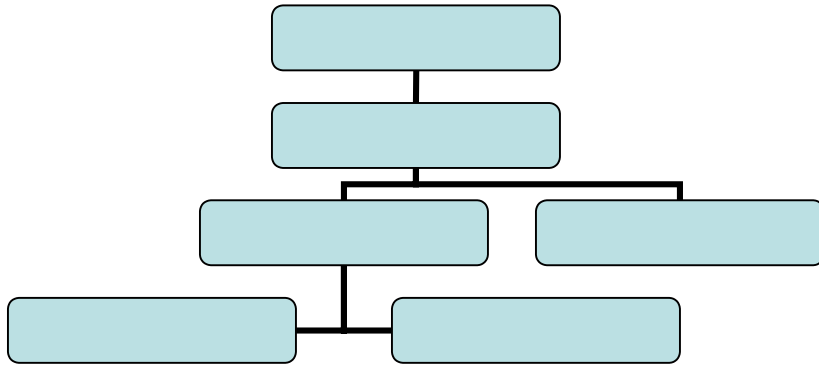
1. _____
2. _____
3. _____



Reconsider the MOI ... why

- _____
- _____
- _____

EMS TRAINING INC



NO Significant MOI

- _____
- _____
- _____
- _____
- _____
- _____
- _____

Why reconsider the MOI?

Determine the chief complaint

Focused Physical Exam

Baseline Vital Signs

SAMPLE History

Baseline vital signs and SAMPLE should be done after _____

EMS TRAINING INC

Significant MOI

Examples of significant MOI

_____	_____
_____	_____
_____	_____
_____	_____
_____	_____
_____	_____
_____	_____

Significant MOI

✓	_____
✓	_____
✓	_____
✓	_____
✓	_____
✓	_____

Rapid Trauma Assessment

1. _____
2. _____
3. _____
4. _____
5. _____
6. _____
7. _____
8. _____

Head

➤	_____
➤	_____
➤	_____
➤	_____

Neck

✓	_____
✓	_____
✓	_____

Apply a _____ now

Cervical collar

It must be the right _____
Size depends on _____
Assess the neck before _____
Explain what you are doing to _____

EMS TRAINING INC

Applying the cervical collar

- ✓ _____
- ✓ _____
- ✓ _____
- ✓ _____

Chest

- _____
- _____
- _____
- _____

Abdomen

- ✓ _____
- ✓ _____
- ✓ _____
- ✓ _____
- ✓ _____

Pelvis

- _____
- _____
- _____
- _____

If the patient complains of pain _____

Extremities

- _____
- _____
- _____

Posterior body

- _____
- _____

Immobilize on a LBB

Baseline Vital Signs & SAMPLE

Which vital signs should you be taking? _____

What are the SAMPLE questions ? _____

EMS TRAINING INC

Transport

Make your decision to transport as soon as you see

1. _____
2. _____
3. _____

Detailed Physical Exam

Detailed Physical Exam

Head

Neck

Chest

Abdomen

EMS TRAINING INC

Pelvis

Extremities

Posterior body

Patient should already be on a _____

On – Going Assessment

➤ _____

➤ _____

➤ _____

➤ _____

➤ _____

General Principles

▪ _____

▪ _____

▪ _____

▪ _____

▪ _____

▪ _____

▪ _____

▪ _____

▪ _____

▪ _____

▪ _____

Questions to ask in class
